

Event Calendar

※Black text: Weekdays Blue text: Saturdays Red text: Sundays & National Holidays

Hosted Events Collaborative Events

MARCH・APRIL		MAY	
3/23 Co-Weaving Our Shared Future Forum I Expo 2005 20th Anniversary Eve: "Expo Aichi and Me"	3/25 Opening Ceremony 3/25~30, 4/5, 6 Flower Picnic	4/19 Expo 2005 Relay Symposium 1	4/26~5/6 Play and Learning Experience Field
3/28~30 Morizo & Kiccoro Musical Think Planetary Act Individual	4/12, 13 Moricoro Park Street Performance Festival 2025	4/13 Moricoro Park Para-Sports Day	4/26~5/6 Expo 2005 Reunion Children's T-Shirt Art Exhibition at Moricoro Park
3/29 TEENS ROCK IN AICHI 2025 15th Anniversary	3/29, 30 Moricoro Park Spring Festival	4/20 35th Toyota Automobile Museum Classic Car Festival	4/26~5/6 All-Japan Gourmet Festival 2025 in Moricoro Park
5/10, 11, 17, 18, 24, 25 Come Together! Aichi Attraction Expo		5/18 Co-Weaving Our Shared Future Forum II: "The Power of Matsuri and Community Bonds" Co-Weaving Our Shared Future Forum III: "Community Building and Resilience"	
5/17 Assistance Dog Festa 2025		5/31 Pottery and Living Market Vol.7	
JUNE		JULY	
6/7, 8, 11~15 All Together! Earth Guardians	6/14, 15 Children's Earth Village~UN Children's Environmental Poster Exhibition & Workshop~	6/20 Talk by a Cree Elder (Canada's Indigenous People) & Performance of Warrior of the Rainbow	7/5, 6, 12, 13 Earthwide Encounters Festival
6/1 World ALS Day in NAGOYA Let's Goron (All Lie Down) Together!	6/7, 8 Mirafiori	6/14 Insect Day Event	7/6 "The Epic World of the Ainu People"
6/1 Pottery and Living Market Vol.7	6/7, 8 Mirai Labo 2nd	6/14 Large-Scale Matchmaking Event 2025 at Moricoro Park	7/6 Dialogue: "Earthwide Encounters-The Great Journey" Speakers: Juichi Yamaguchi & Yoshiharu Sekino
6/21, 22 YON FES 2025		6/28, 29 "Teto Teto" Market	
7/6 Co-weaving Our Shared Future Forum IV: "Global Challenges and Resilience"			
AUGUST		SEPTEMBER	
8/2, 3, 9~11, 16, 17 Enjoy Summer and Night Fantasy	8/23, 24, 30, 31 Enjoy Summer	9/13~25 Sustainable Art Festival	
8/1~3, 8~10 Campus Festival for Loving the Earth	8/11 Expo 2005 Relay Symposium 2	8/22~24, 29~31 Campus Festival for Loving the Earth	9/13 Expo 2005 Relay Symposium 3
8/17 18th Children's Shopping Street		9/6, 7 Tebasaki (chicken wings) Summit* Presents Gulf Aichi Nostalgic Car Parade & Food Truck Festival	9/14 Co-Weaving Our Shared Future Forum V: "Global Challenges, Art and Museum"
		9/13~15 All-Japan Gyoza Festival	9/23 Nagoya Philharmonic Orchestra Concert
		9/7 Expo 2005 20th Anniversary Gathering (Tentative Title)	9/20, 21 Moricoro Park Autumn Festival

Access	
By Train: TobuKyuryo Line (Linimo) → Ai・Chikyuhaku Kinen Koen Station *The park is just outside the station.	Access by Bus
From Nagoya Area Nagoya Station From Kasugai or Seto Area Kozoji Station From Nishi-Mikawa Area Okazaki Station	From Nagoya Station A direct bus is available from the Meitetsu Bus Center at Nagoya Station. Please use public transportation when visiting the park.
Fujigaoka Station Yakusa Station Yakusa Station	
Ai・Chikyuhaku Kinen Koen Station	

List of Supporting Companies and Organizations We would like to introduce the companies and organizations that are supporting the Expo 2005 20th Anniversary Festival. Thanks to their cooperation, we will continue to make the event a great success.

Gold Sponsor アオキスーパー Silver Sponsor brother 日本郵便 中日本建設コンサルタント株式会社 Bronze Sponsor Mononoyakata Co., Ltd. Masayoshi Yamazaki Administrative Scrivener Office Standard Sponsor JAPAN TRADE COMPANY, Co., Ltd. Contents-an Inc. HIMENO Co., Ltd.

EVENT INFORMATION

July Edition

Aichi Expo 20th Anniversary Project

愛・地球博20祭

2025 03.25 TUE ▶ 09.25 THU

Expo 2005 Aichi Commemorative Park (1533-1 Otsu, Ibaragabasama, Nagakute City, Aichi Prefecture)



Scan the code for event details.

Permanent Exhibitions

Special Exhibition at the Expo 2005 Aichi Commemorative Hall
Expo 2005 Museum

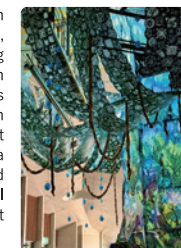
This exhibition, designed to be enjoyable for children as well, features videos and illustrations that trace the park's transformation from past to present, explore the philosophy and history behind the Expo's development, and highlight various initiatives and their outcomes.



Tree of the Earth

Global Center

In collaboration with Atsumi Sakai, a paper-cutting artist based in Nagakute City, this installation projects paper-cut artworks onto a tree-shaped three-dimensional object using light and video.



Community Garden "Kaze-no-Oka(Windy Hill)"

Rooftop Garden at the Global Center

A citizen-participation project to create a rooftop garden where people and wildlife can gather. On June 15, a botanical dyeing workshop using the pampas grass leaves harvested from the rooftop garden is scheduled.



Corridor of Colors

Various Locations in the Park

Students from 12 universities in Aichi Prefecture, specializing in design and architecture, participate in a project to colorfully decorate the park in tune with the seasons.



Palm Time Travel

Various Locations in the Park

A digital stamp rally that takes you on a riddle-solving journey through the park, featuring videos that revisit the scenery of Expo 2005 Aichi.



Secretariat of the Aichi Expo 20th Anniversary Project Executive Committee
(For inquiries regarding the Expo 2005 Aichi 20th Anniversary Festival: TEL 0561-61-2260)

JUNE

June 7 (Sat), 8 (Sun), and June 11 (Wed) - 15 (Sun) 10:00 a.m. - 5:00 p.m.

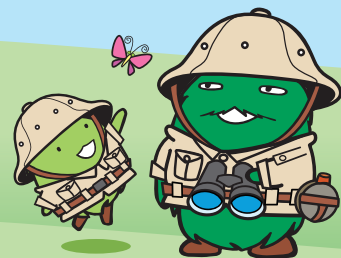
All Together! Earth Guardians

Enjoy fun courses and hands-on fieldwork where parents and children can learn about the environment together!



©Gakken
※Image Photo

Discover the animals that inhabit Morikoro Park and learn about endangered species from around the world through educational panels!



Try out "Plogging" - a new eco-friendly fitness trend that combines jogging with picking up litter! Come together! Join the Earth Protection Team!



Join a nature-themed fieldwork session in Morikoro Park to deepen your understanding of the environment and biodiversity.
(※In case of rain, the workshop will be held indoors.)

June 14 (Sat) and 15 (Sun)

Children's Earth Village - UN Children's Environmental Poster Exhibition and Workshop

📍 Multipurpose Studio 10:30 a.m. - 4:00 p.m.

Children from around the world have drawn their thoughts on the environment. This workshop and exhibition uses their posters to think about the global village of the future. (For upper elementary school students)

June 20 (Fri)

Discover the Indigenous wisdom of the Cree people of Canada through the story of Warrior of the Rainbow

📍 Auditorium, Aichi Prefectural University Nagakute Campus 5:00 p.m. - 8:00 p.m.

Discover the Indigenous wisdom of the Cree people of Canada through the story of Warrior of the Rainbow, as told by Cree Elder Kenneth and actress Kanako Sakaguchi.

Scan the code for event details. ▶



JULY

July 5 (Sat), 6 (Sun), and June 12 (Sat), 13 (Sun) 10:00 a.m. - 5:00 p.m.

Earthwide Encounters Festival

An event will be held to experience the world's cultures and cuisines while learning about international exchange!



July 5 (Sat), 6 (Sun)

Enjoy world folk music and dance while fully savoring global cuisine from food trucks!



July 5 (Sat), 6 (Sun)

In the interactive cultural area where you can see, touch, and experience the cultures from around the world, a wide variety of authentic goods awaits you! Don't miss the exciting street performance!



©マガジンハウス



July 12 (Sat), 13 (Sun)

A talk show and workshop with Kayoko Ikeda, the editor of If the World Were a Village of 100 people, will be held!

Special Program "Co-weaving Our Shared Future from the viewpoint of Human History"

July 6 (Sun)

📍 Global Citizen Exchange Center, Taikengakushu (Hands-on Learning) Room

1:00 p.m. - 1:40 p.m. (tentative)

"The Epic World of the Ainu People"

Ainu people's traditional performance

Performers: Debo Akibe (Performed as Asirpa's great-uncle in Golden Kamuy; also supervised Ainu language and culture) and others:

1:50 p.m. - 2:50 p.m. (tentative)

Dialogue: "Earthwide Encounters-The Great Journey" Speakers: Juichi Yamaguchi & Yoshiharu Sekino (Interviewer: Tetsuya Inamura)

Juichi Yamaguchi, a world-renowned primatologist (study of gorillas) and anthropologist (Director of the Research Institute for Humanity and Nature, former President of Kyoto University), joins Yoshiharu Sekino, an explorer and medical doctor (Professor Emeritus at Musashino Art University) who famously retraced the path of human migration (Great Journey) in reverse - from South America to Africa - using only human power. Together, they will explore the future of humanity through their fruitful experiences.

3:00 p.m. - 5:00 p.m. (tentative)

Co-Weaving Our Shared Future Forum IV: "Global Challenges and Resilience"

As we face the precarity brought on by global issues such as environmental limits, conflict, natural disasters, and pandemics, this forum brings together experienced researchers and practitioners, including voices from Indigenous communities, to reflect on how humanity can move forward. The event encourages collective thinking about resilience and the pathways to a sustainable, shared future.

Collaborative Events

※For more details about each collaborative event, please contact the respective organizer.

June 7 (SAT) and June 8 (SUN)

Mirafiori

An event where European car owners come together to enjoy a relaxing holiday! 🚗
A wide variety of colorful European cars will be on display across the spacious lawn area, along with numerous shops, flea market stalls, and food trucks!



Organized by: Cinquecento Museum
Location: Great Green Square
Time: 10:00-15:00

June 7 (SAT) and June 8 (SUN)

Mirai Labo 2nd

We offer a space to engage with future social issues and possibilities, where themes such as "environment," "sports," and "education" take center stage. Visitors can also explore hands-on experiences using the metaverse and the latest social media tools.



Organized by: Mirai Lab Executive Committee
Location: Global Center
Time: 10:00-17:00

June 14 (SAT)

Large-Scale Matchmaking Event 2025 at Morikoro Park

We are excited to host a matchmaking event for up to 400 participants! Enjoy group strolls around the park and fun mini-games to help you connect with others. Our staff will be there to support you and encourage conversations with as many people as possible!



Organized by: Childcare Support Division,
Aichi Prefectural Government Bureau of Welfare
Location: Gymnasium, etc.
Time: 13:05-16:45

June 14 (SAT)

Insect Day Event

A wide variety of insect-themed events await, featuring displays of insect specimens and more! Enjoy fun quizzes, street performances, and a capsule toy vending machine offering a limited-edition insect-themed badge. There will also be a free consultation corner for pests...



Organized by: Japan Pest Control Association
(Public Interest Incorporated Association)
Location: Mikazuki Lounge

June 21 (SAT) and June 22 (SUN)

YON FES 2025

An outdoor festival that has been held at Expo 2005 Aichi Commemorative Park since 2016.
This year marks its eighth time. Let's come together and enjoy music surrounded by the rich natural beauty of Expo 2005 Aichi Commemorative Park.

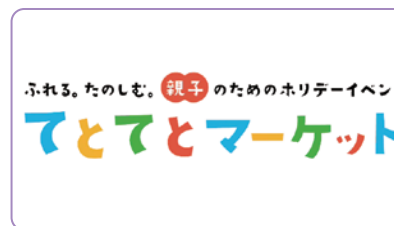


Organized by: YON FES 2025
Executive Committee
Location: Great Green Square, etc.

June 28 (SAT) and June 29 (SUN)

"Teto Teto" Market

An event that brings families closer together through fun parent-child workshops and handmade crafts, while celebrating the culture of traditional handcrafting.



Organized by: Teto Teto Market Project
Location: Great Green Square